

Submitted by: Chairman of the Assembly at the
Request of the Mayor

Prepared by: Anchorage Water & Wastewater
Utility

For reading: May 5, 1998

CLERK'S OFFICE

APPROVED

Date: 6-2-98

ANCHORAGE, ALASKA

AO NO. 98-82

**AN ORDINANCE CREATING 32nd AND DENALI LATERAL SANITARY SEWER
SPECIAL ASSESSMENT DISTRICT 211, AND DETERMINING TO PROCEED
WITH THE PROPOSED IMPROVEMENTS THEREIN.**

THE ANCHORAGE ASSEMBLY FINDS THAT:

A. The Municipality has been petitioned to create a special assessment district for the construction of sanitary sewer improvements described in paragraph "C" below, within the area described in paragraph "D" below.

B. The petition to create the special assessment district has been signed by sufficient and proper owners and has been filed with the Municipal Clerk.

C. The sanitary sewer improvements include all necessary piping and appurtenances required to serve the area described in paragraph "D" below and as shown on the attached map.

D. The sanitary sewer improvements described above are necessary and will benefit the following described property which will be assessed for said improvements:

32nd and Denali, LID 211

Commencing for reference at the N1/16th section corner common to Sections 29 and 30, T13N, R3W, S.M., Alaska: Thence N89°59'00"W, 50.00 feet to the southeast lot corner of Lot 1A, Country Village Subdivision; Thence continuing N89°59'00"W, along the south lot line of said Lot 1A, a distance of 342.77 feet to the southeast lot corner of Tract G, High Line Subdivision, Addition Number 1, said lot corner to be known as the TRUE POINT OF BEGINNING; Thence N00°14'51"W, along the east lot line of said Tract G, 119.72 feet; Thence S89°59'00"E, 2.57 feet; Thence N00°11'33"W, 30.00 feet; Thence N89°59'00"W, 30.00 feet to the intersection of East Thirty-Second Avenue and Gambell Street; Thence N00°10'15"W, along the centerline of Gambell Street, 180.00 feet; Thence N89°59'00"W, along a line being 180.00 feet from, but parallel to, the centerline of East Thirty-Second Avenue, 359.57 feet to a point on the west lot line of Tract A, High Line

RETURN TO:

Anchorage Water & Wastewater Utility
Private Development
3000 Arctic Boulevard
Anchorage, Alaska 99503-3898
(907) 564-2747

AM 472-98

Subdivision, Addition Number 1; Thence S00°10'15"E, along said west lot line, 180.00 feet to the centerline of East Thirty-Second Avenue; Thence N89°59'00"W, along said centerline, 359.52 feet; Thence N00°10'15"W, 30.00 feet to the southeast lot corner of Tract D, High Line Subdivision, Addition Number 1; Thence continuing N00°10'15"W, along the east lot line of said Tract D, 150.00 feet; Thence N89°59'00"W, along a line being 180.00 feet from, but parallel to, the centerline of East Thirty-Second Avenue, 180.20 feet to the west lot line of said Tract D; Thence S00°09'39"E, along the west lot line common to Tracts D and E, High Line Subdivision, Addition Number 1, a distance of 330.00 feet to the southwest lot corner of said Tract E; Thence S89°59'00"E, along the south lot line common to Tracts E, F and G, High Line Subdivision, Addition Number 1, 926.56 feet to the southeast lot corner of said Tract G, said lot corner also known as the TRUE POINT OF BEGINNING.

E. The total cost of the proposed sanitary sewer improvement is estimated at \$144,150. Said estimated cost will be prorated as shown on the attached preliminary assessment roll.

NOW THEREFORE, THE ANCHORAGE ASSEMBLY ORDAINS:

Section 1. There is established 32nd and Denali Lateral Sanitary Sewer Assessment District Number 211, consisting of the area described in paragraph "D" above.

Section 2. The Municipality shall proceed with the proposed sanitary sewer improvements as described.

Section 3. An account shall be kept of all costs of the proposed improvements.

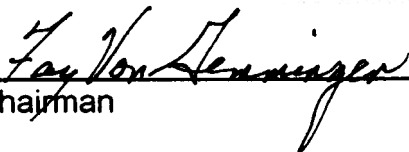
Section 4. After the improvements have been completed and the cost of the improvements known, the Mayor shall prepare a final assessment roll for this special sanitary sewer assessment district.

Section 5. The authorized percentage of the cost, or rate to be assessed against the property, shall be computed in accordance with the Anchorage Municipal Code and Anchorage Wastewater Utility Tariff in effect at the time the assessment roll is approved by the Municipal Assembly. Additionally, a Special Assessment Collection Charge as authorized by the Municipal Code and Wastewater Utility Tariff will be charged annually to each active account.

Section 6. The Mayor shall cause this ordinance to be recorded in the office of the Anchorage District Recorder.

Section 7. This ordinance is effective upon passage and approval

PASSED AND APPROVED by the Anchorage Assembly this 2nd day of June, 1998.


Chairman

ATTEST:


Municipal Clerk



AND

GE

ASKA

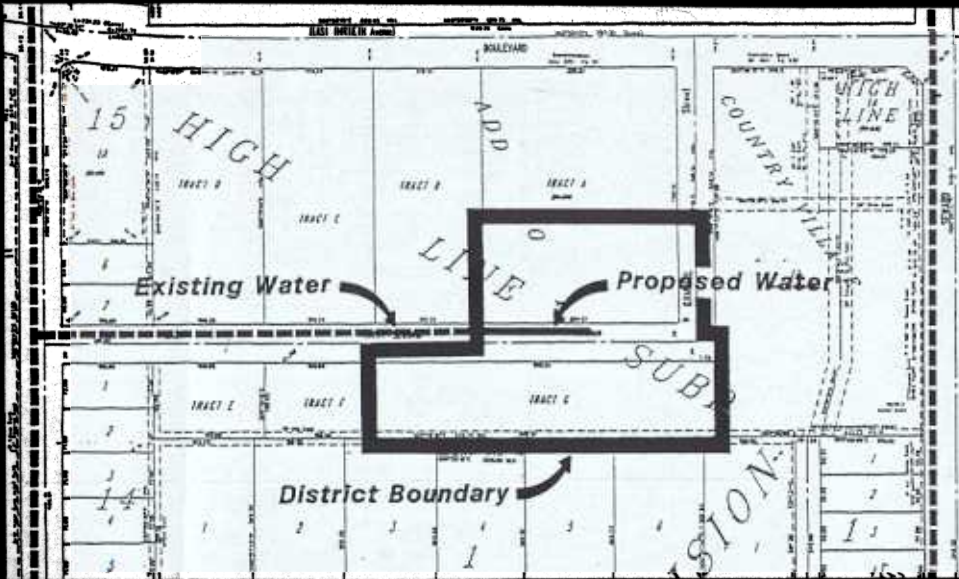
32nd and Denali, LID 211 **Preliminary Assessment Roll** (SANITARY SEWER)

Project Cost: \$144,150
Lateral Rate: \$0.768497
Trunk Rate: \$0.013302
Interest Rate: 7.32%

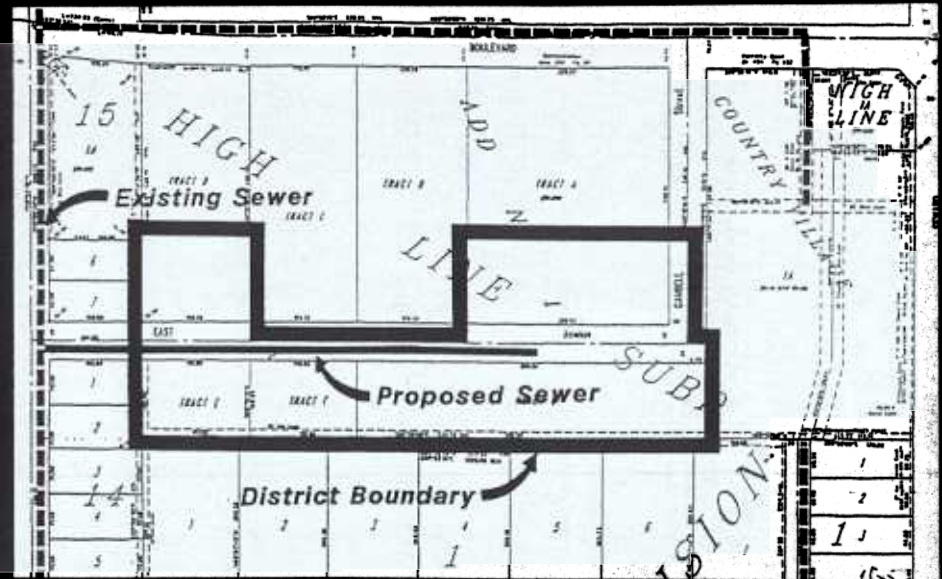
Item	Subdivision	Parcel					LATERAL				TRUNK				Total Ass'mt
		Number	Grid	Lot	Blk	Area	Ass'ble Area	Principal	Yrs	Paym't	Ass'ble Area	Principal	Yrs	Paym't	
1	HIGH LINE, Addn 1	009-043-30	1631	Trt G	--	67,908	67,908	\$52,187.09	20	\$4,704.88	67,908	\$903.31	2	\$467.60	\$53,090.41
2	HIGH LINE, Addn 1	009-043-31	1631	Trt F	--	21,600	21,600	\$16,599.54	20	\$1,496.51	21,600	\$287.32	1	\$287.32	\$16,886.86
3	HIGH LINE, Addn 1	009-043-32	1631	Trt E	--	21,600	21,600	\$16,599.54	20	\$1,496.51	21,600	\$287.32	1	\$287.32	\$16,886.86
4	HIGH LINE, Addn 1	009-043-33	1631	Trt D	--	81,115	27,030	\$20,772.47	20	\$1,872.72	0	\$0.00	0	\$0.00	\$20,772.47
5	HIGH LINE, Addn 1	009-043-36	1631	Trt A	--	148,353	49,436	\$37,991.42	20	\$3,425.08	0	\$0.00	0	\$0.00	\$37,991.42

TOTALS: 187,574 \$144,150.06 \$1,477.96 \$145,628.01

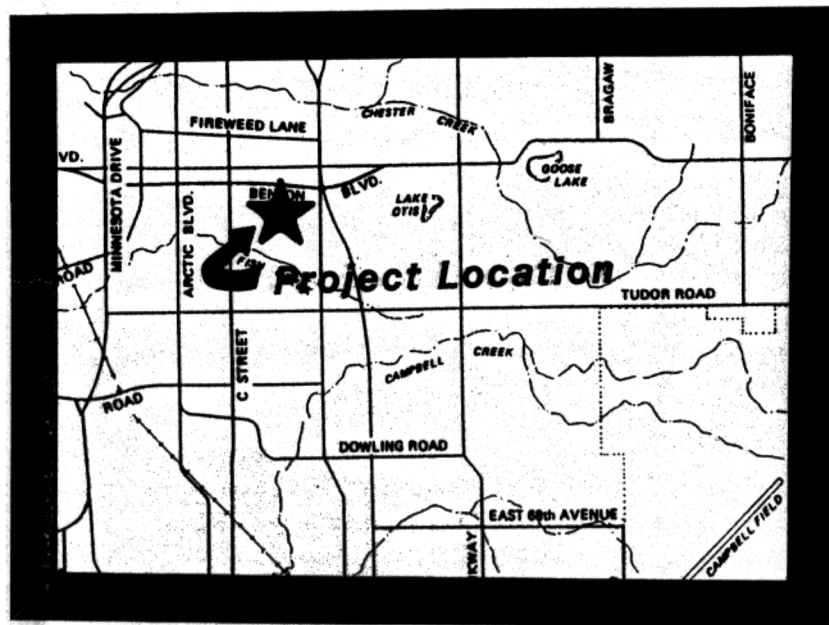
(All Parcels S.M., ALASKA)



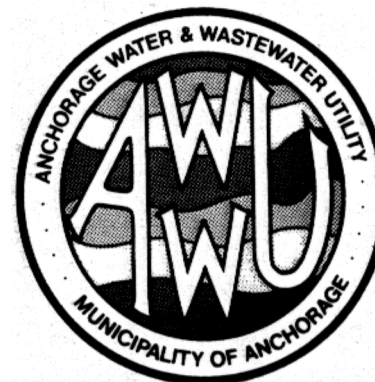
WID 438 (water)



LID 211 (sewer)



32nd & DENALI



043948
ANCHORAGE
RECORDING DISTRICT
27
1999 JL -9 AM 11:27
REQUESTED BY
MOA

32nd and Denali, LID 211
Preliminary Assessment Roll
(SANITARY SEWER)

Project Cost: \$144,150
Lateral Rate: \$0.768497
Trunk Rate: \$0.013302
Interest Rate: 7.32%

Item	Subdivision	Parcel					LATERAL				TRUNK				Total	Property Owner
		Number	Grid	Lot	Blk	Area	Ass'ble Area	Principal	Yrs	Paym't	Ass'ble Area	Principal	Yrs	Paym't	Ass'mt	
1	HIGH LINE, Addn 1	009-043-30	1631	Trt G	--	67,908	67,908	\$52,187.09	20	\$4,704.88	67,908	\$903.31	2	\$467.60	\$53,090.41	FOSS, C.R. & Judy T.
2	HIGH LINE, Addn 1	009-043-31	1631	Trt F	--	21,600	21,600	\$16,599.54	20	\$1,496.51	21,600	\$287.32	1	\$287.32	\$16,886.86	FOSS, C.R. & Judy T.
3	HIGH LINE, Addn 1	009-043-32	1631	Trt E	--	21,600	21,600	\$16,599.54	20	\$1,496.51	21,600	\$287.32	1	\$287.32	\$16,886.86	FOSS, C.R. & Judy T.
4	HIGH LINE, Addn 1	009-043-33	1631	Trt D	--	81,115	27,030	\$20,772.47	20	\$1,872.72	0	\$0.00	0	\$0.00	\$20,772.47	WEDGEWOOD MORT. L.P.
5	HIGH LINE, Addn 1	009-043-36	1631	Trt A	--	148,353	49,436	\$37,991.42	20	\$3,425.08	0	\$0.00	0	\$0.00	\$37,991.42	CHOI, Seong Moon

TOTALS: 187,574 \$144,150.06 \$1,477.96 \$145,628.01